

SHARP

MX-M354U/N
MX-M314U/N
MX-M264U/N

Digital Multifunction System



Give Office Work a Boost
with This Highly Functional
Colour-Scan-Capable MFP



COPY

NETWORK PRINT

NETWORK COLOUR SCAN
OPTION for U models

SHARPEDESK
OPTION for U models

FAX
OPTION

Stepped-Up Performance from a Sharp-Enha

Four-in-one function, enhanced ease of use, increased energy efficiency, and easy expandability make the MX-M354/M314/M264U/N the upgraded MFP no busy office should be without.

Along with fast, high-quality copying and network printing, this A3 B/W solution offers full-colour network scanning* capability and a convenient fax option—all in one attractive, space-saving unit. To boost productivity, the MX-M354/M314/M264U/N features a high-speed 100-sheet Reversing Single Pass Feeder* as well as other business-supporting functions. And opting for the innovative Sharp OSA (Open Systems Architecture) development platform will open the door to more advanced functions—and greater efficiency—through easy integration with network applications.

For added benefit, the MX-M354/M314/M264U/N's environmentally advanced design enables low power consumption, and its multi-layered security solutions provide reliable data protection.

* Standard on N models, optional for U models.

Style, Function, and Ease of Use

Sleek and streamlined, the MX-M354/M314/M264U/N enhances the décor of any workplace. And thanks to a 7.0-inch WVGA touchscreen colour LCD control panel—with optional thumbnail display and data file previews—it raises the bar on user friendliness and easy navigation. A retractable QWERTY keyboard option offers added convenience.



Thumbnails



Preview



Choice of Screen Style

The MX-M354/M314/M264U/N offers a choice of six LCD screen colours. While the default colour is green, users can easily select their preferred background style.



anced Solution

A3 Colour Network Scanning*

With the colour-scan-capable MX-M354/M314/M264U/N, paper-based documents can be scanned into digital form, making them easier to organise, store, and distribute. Documents containing colour photos, illustrations, and highlighting can be scanned and saved in their original colours as digital data for use in presentations, reports, ads, and other mediums where colour makes for more effective communication.

* Standard on N models, optional for U models.



Advanced Environmental Performance

The MX-M354N/M314N/M264N boasts state-of-the-art environmental technologies and a range of eco-functions. A short warm-up time is just one of the pluses making this MFP a real energy saver. Dramatically reduced power consumption also means that TEC values*¹ are significantly lower than the maximum allowable values determined by ENERGY STAR®.

*¹ Typical amount of energy consumed in a hypothetical week measured as stipulated under the ENERGY STAR® programme. Value is for total electricity consumed during five days of use, cycling between full operation and Sleep mode or turned off, and two days in Sleep mode or turned off.

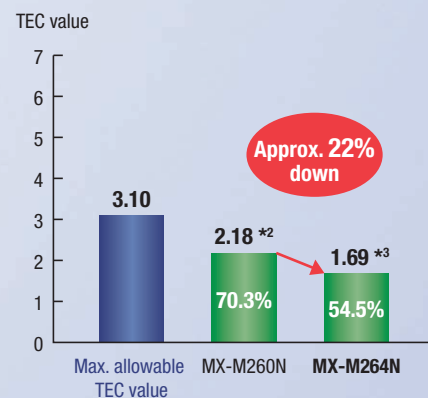
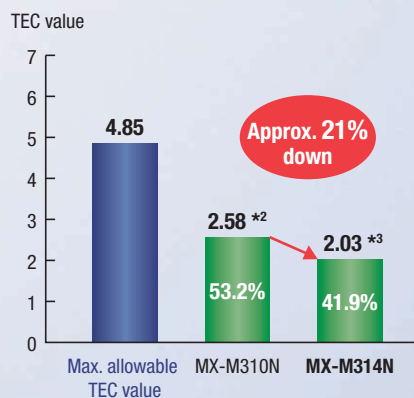
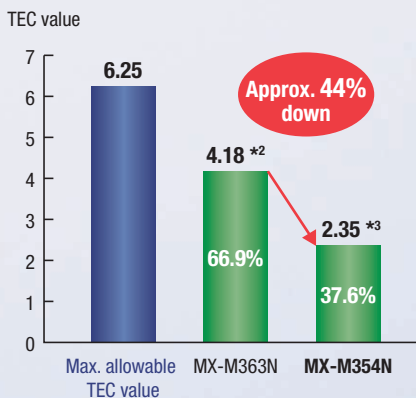
Short Warm-Up Time



N models

20 seconds or less

Lower TEC Value



*² Measured at 230V.

*³ Measured at 230V. TEC values for U models are the same as those for N models, provided the U models are equipped with optional MX-RP15, MX-PB15, and MX-NSX1.

COPYING & NETWORK PRINTING

PRODUCTIVE

Super-Efficient Output



The MX-M354/M314/M264U/N delivers a fast output of **35/31/26 cpm/ppm***, reducing the time it takes to produce large-volume documents with memory-intensive graphics. The first copy comes out in just **4.0/4.4/4.9 seconds** to save valuable time when performing multiple short-run jobs. What's more, the short, straight paper path minimizes misfeeds and thereby saves paper.

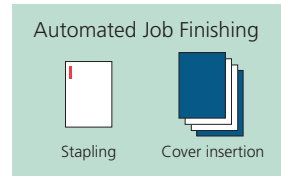
* A4 (8 1/2" x 11"), long-edge feeding



Space-Saving Inner Finisher



With the help of this space-efficient **Finisher** option, the MX-M354/M314/M264U/N can handle document sorting and stapling jobs with automated ease.



Productive Collated Output from Memory



The MX-M354/M314/M264U/N's Scan Once/Print Many function only requires a single scan of a multi-page original for copying, and the RIP Once/Print Many function only needs to download print data once from the PC for printing. The machine then automatically saves the data into memory and outputs **collated** sets of copies or printouts in the proper page order (electronic sorting), with each set **offset stacked** for easier retrieval.



Multi-page original is scanned... stored in memory in proper page order... and stacked offset (or print data sent from PC)

Large Paper Capacity



For large-volume jobs and a wider selection of available paper sizes, the MX-M354/M314/M264U/N can accommodate two types of extra paper drawers for a total paper capacity of **2,100 sheets**. When a tray runs out of paper, the **Auto Tray Switching** function automatically switches to another paper tray filled with the same size paper, allowing you to do extra-large volume jobs without worry.



Built-In Stackless Duplex Module



The MX-M354/M314/M264U/N can make **two-sided copies and printouts** using its built-in stackless duplex module, effectively reducing paper costs as well as saving filing space. Duplex copying is even more effective when the duplex module is used together with the **100-sheet RSPF** (reversing single pass feeder)*, which efficiently feeds in either one- or two-sided originals.

* Standard on N models, optional for U models.

Network Tandem Function*



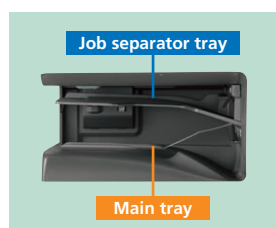
When two MX-M354/M314/M264U/Ns are connected to the same office network, you can use both simultaneously to double copying/printing output to up to **70/62/52 cpm/ppm**. Large-volume jobs can be completed with ease, enabling you to meet tight deadlines.

* All models require optional MX-HD12; U models additionally require optional MX-PB15.

Job Offset and Job Separator



The MX-M354/M314/M264U/N ensures your documents will stay neatly organised even when others are using the MFP at the same time. To make it easier to locate and retrieve your documents from the tray, the **Job Offset** function stacks the various print jobs slightly offset from one another. And the optional MX-TR11 **Job Separator Tray** prevents copy/print/fax jobs from getting mixed together by letting you send some of those jobs there, rather than to the main tray. You could, for example, send your printer output to the Job Separator Tray to keep it separate from any copies and faxes in the main tray.



Job Build for Large-Volume Scanning



The MX-M354/M314/M264U/N easily handles large-volume copy jobs exceeding the RSPF's 100-sheet* capacity. For example, a 270-sheet original can be scanned as batches of 100 + 100 + 70 sheets and automatically stored in the MFP's memory. Users can then print the entire document in a single run.

* A4 (8 1/2" x 11"), 80 g/m²

Proof Copying or Printing*



To prevent the waste of large-volume misprints, the MX-M354/M314/M264U/N lets users output only the first set to check the content, adjust settings if necessary, and then initiate output of the rest of the job from the LCD control panel.

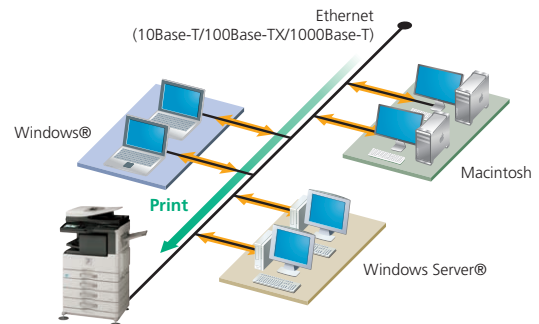
* Requires optional MX-HD12.

NETWORK-READY

Supports Most Office Environments

- The MX-M354/M314/M264U/N works as a network printer with the latest and most commonly used operating systems and network protocols, including **IPv6**, and even in mixed OS environments. You get fast, powerful network printing via the 1000Base-T **Gigabit Ethernet** standard.
- The MX-M354/M314/M264U/N supports the **PCL 6** printer language.* For compatibility with **PostScript® 3™**, the MX-PK11 PS3 Expansion Kit is available.

* U models require optional MX-PB15.

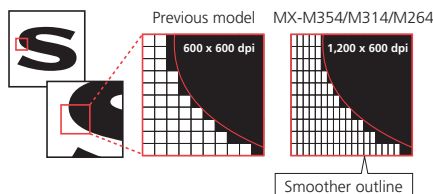


SUPERB IMAGE QUALITY

1,200 x 600-dpi Printing

The MX-M354/M314/M264U/N's print engine provides razor-sharp 1,200 x 600-dpi printing*—without sacrificing output speed—for ultra-clear image quality. Fine lines and small text come out crisper and easier to read.

* U models require optional MX-PB15.



Optimum Copy Quality

600-dpi resolution and 256-level greyscale ensure finely detailed reproduction, while **Digital Auto Exposure Control** provides optimum copy contrast. For best results, there are seven exposure modes to choose from. Users can, for example, select Text mode for text-only originals or Photo mode for detailed, high-quality reproduction of photos and delicate halftone images.

VERSATILE

USB Memory Direct Print*

One of the two USB ports on the MX-M354/M314/M264U/N is located at the front of the MFP beneath the control panel. It comes in handy when printing data directly from USB memory devices—an indispensable function for users who are in a hurry or who want quick machine access without a PC.

* For all models, direct TIFF/JPEG printing requires optional MX-HD12; direct PDF printing requires optional MX-HD12 and MX-PK11. U models additionally require optional MX-PB15.



Other Key Features

Copy & Print

- **Watermark*** prints a user-selected watermark, such as "Urgent," on each page to indicate the status of the document.
* Requires optional MX-HD12.
- **Tab Copy / Tab Print** can copy or print directly onto tabs on document separators and insert them into assigned positions.
- **Multi-Shot** copying and **N-up** printing
- **Pamphlet Style** copying/printing
- **Multi-Page Enlargement** copying/printing
- **Cover/transparency** insertion

Print

- **Direct Print***¹ allows **PDF**, **TIFF**, or **JPEG** files to be printed without using the printer driver or opening applications.
- **Carbon Copy Print***² mode automatically outputs multiple printouts of the same data on plain and/or coloured paper; convenient for invoices and purchase orders.
- **Barcode font compatibility***³

*1: Direct TIFF/JPEG printing is standard on N models; U models require MX-PB15. For all models, direct PDF printing requires MX-PK11; U models additionally require MX-PB15. Direct printing may not support all PDF, TIFF, and JPEG formats.

*2: U models require MX-PB15. *3: Requires optional MX-PF10.

Versatile Paper Handling

The MX-M354/M314/M264U/N accommodates a wide range of paper sizes, from A5 (5 1/2" x 8 1/2") to A3 (11" x 17"). It can also handle heavy paper stock up to **200 g/m²**, overhead transparencies, and other types of paper, further expanding the range of printing applications.

Image Editing Functions

The MX-M354/M314/M264U/N includes various editing functions made possible by digital technology.

- **Photo Repeat** places multiple copies of an image onto a single sheet.
- **Mirror Image** makes a reverse image of the original.
- **XY Zoom** adjusts the horizontal and vertical ratios independently.
- **B/W Reverse** reverses the black and white of an image.

Please see specifications for a list of available convenient functions.

Copy

- **Book Copy** is convenient for compiling copies of a book or bound originals into pamphlet format.
- **Card Shot** enables easy copying of both sides of a card (credit cards, ID cards, etc.) onto a single page.
- **Mixed Size Original Copy** mode automatically distinguishes documents of mixed sizes* (such as A3/B4, B4/A4, etc.) fed through the RSPF and chooses the appropriate paper.

* Some restrictions apply when combining paper sizes of different format series.



IMAGE SENDING

: Scan : Fax

A3 Colour Network Scanning*



The MX-M354/M314/M264U/N works as a **full-colour network scanner**. Converting any type of paper-based document, up to A3 (11" x 17") in size, into an editable digital file is as easy as making a copy. The MX-M354/M314/M264U/N supports TIFF, PDF, PDF/A, encrypted PDF, XPS, and JPEG file formats. Enhanced scan performance improves the legibility of extremely fine text and allows vivid colour reproduction in scanned documents. And **Auto Colour Selection** chooses the right mode for scanning originals containing both colour and B/W pages.

* U models require optional MX-NSX1.

Quick Scanning



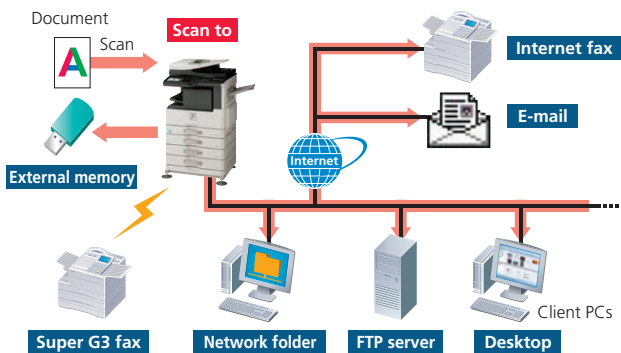
For both colour*¹ and B/W documents, the MX-M354/M314/M264U/N carries out scanning at the impressive speed of **50 opm***² (originals per minute) and can complete large scan jobs with ease and efficiency.

*1: Faxing is available in B/W only. *2: Single-side scanning

Multiple Distribution of Scanned Files

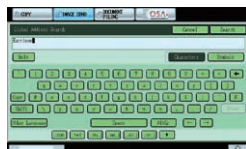
With the touch of a few on-screen buttons, you can choose different ways to distribute your scanned documents. **Scan to E-mail** sends documents as an e-mail attachment. **Scan to FTP Server** scans documents directly to an FTP server for storage. **Scan to Desktop** sends scanned documents directly to your PC desktop. **Scan to Network Folder (SMB)** sends files to a shared folder on a networked Windows PC. **Scan to USB Memory*** scans documents directly to USB memory devices. And **Scan to Fax** enables conventional faxing or Internet faxing.

* Scan to USB memory is standard on both N and U models (MX-NSX1 is not required).



LDAP Support

Built-in LDAP (lightweight directory access protocol) support eliminates the need to enter or register full addresses. By entering the first few letters of the recipient's name, the MX-M354/M314/M264U/N displays a list of possible matches from your company's LDAP server. Selected addresses can be stored to the MX-M354/M314/M264U/N's address book.



High-Speed Faxing

The optional MX-FX11 Fax Expansion Kit turns the MX-M354/M314/M264U/N into a 33.6 Kbps **Super G3 fax** machine. Using JBIG compression technology, the MX-M354/M314/M264U/N can send an A4 (8 1/2" x 11") size page in under 3 seconds*. Use the 100-sheet RSPF to further boost faxing efficiency. And, because **Quick On-Line Transmission** can start dialling and transmitting as soon as the first page is scanned into memory, you can send documents in **much less time**.

* Based on Sharp's standard chart with approximately 700 characters (A4 or 8 1/2" x 11" long-edge feeding) at standard resolution.

PC-Fax/PC-Internet Fax*

Directly send a document created on your PC to a recipient's fax machine via a phone line or the Internet without printing to paper. Save time and paper costs while retaining original document quality.

* PC-Internet Fax requires optional MX-HD12 and MX-FWX1; PC-Fax requires MX-FX11.

Internet Fax*

Economically send and receive faxes to and from other T-37-compliant Internet fax machines via the Internet. Thanks to **Direct SMTP** support, outgoing Internet faxes do not go through your mail server, making transmission faster and cheaper.

* Requires optional MX-HD12 and MX-FWX1.

Paperless Faxing with Inbound Routing*

Paperless faxing with inbound routing lets you check incoming faxes via e-mail before printing them out. It can also forward incoming faxes to destinations—another fax/Internet fax machine, an FTP server, a network folder (SMB), or a PC desktop—specified for each sender.

* Requires optional MX-HD12 and MX-FX11 or MX-FWX1.

Other Key Features

Scan & Fax

- **One-touch auto dial keys** register up to **1,000** numbers for frequently used destinations
- **Broadcast transmission** to up to 500 destinations
- **Program keys** (up to 48 keys) are available to set up frequently used transmissions for instant recall
- **Easy text entry*** lets you enter addresses, file names, subject titles or messages from the LCD control panel
 - * Only addresses can be entered for faxing.
- **Mixed size original scanning** automatically distinguishes documents of mixed sizes fed through the RSPF

Fax

- **Duplex transmission/reception** sends and prints out two-sided documents
- **SD memory card backup** ensures documents remain safely backed up in memory, even in the event of a power failure
- **Rotation transmission/reception** rotates incoming and outgoing faxes to match the direction of the printing paper
- **Fax destination confirmation** allows users to reconfirm fax numbers before sending to prevent transmission errors

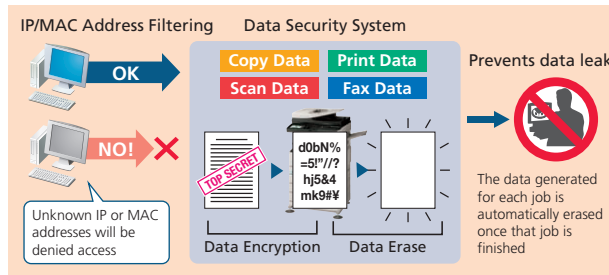
SECURITY

Industry-Leading Multi-Layered Security

With multiple levels of network and data security to cover a wide range of security needs, Sharp's industry-leading security solutions protect your business assets and bring peace of mind. The MX-M354/M314/M264U/N safeguards sensitive data with powerful, enhanced security functions that eliminate the worry of unauthorised use and guarantee greater protection for your confidential information.

Secure Network Access

The **IP/MAC address filtering** function provides highly secure operation by restricting access to the MFPs on your office network. Only PCs that have either their IP address or MAC (media access control) address registered are allowed to use the MFPs. Attempted access from an unknown IP or MAC address will be denied, preventing unauthorised use. The MX-M354/M314/M264U/N also supports the **IEEE 802.1X** standard for port-based network access control, which blocks all access from unauthorised devices.

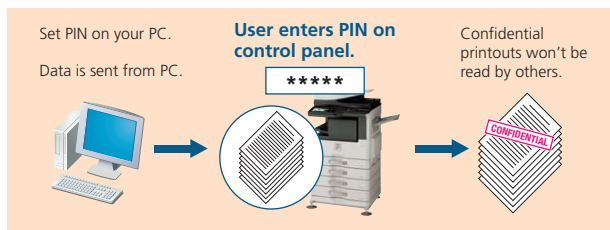


Data Security Kit

Digital copier/printers or MFPs can retain hundreds of pages of confidential information from previous jobs on their hard disks or internal memory. To safeguard this information from unauthorised access, the optional **Data Security Kit** automatically **encrypts and erases** the data from each completed job as well as the data stored on the hard disk and in the address book.

Confidential Print

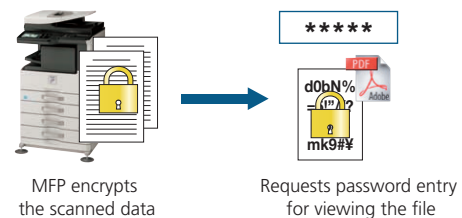
To keep others from seeing confidential documents as they are being printed out, the MX-M354/M314/M264U/N's Confidential Print function requires the user to enter in a PIN (personal identification number) at the machine before printing can begin.



Encrypted PDF with Password Protection

To prevent unauthorised viewing of confidential image data, the MX-M354/M314/M264U/N enables users to password protect and encrypt PDF data. By setting a password when scanning, users can transmit a PDF over the network in encrypted format. Then, after transmission, viewers will only gain access to the encrypted PDF after successfully re-entering the chosen password.

Note: Direct printing of encrypted PDF files requires optional MX-HD12.



User Authentication

The MX-M354/M314/M264U/N prevents unauthorised use by requiring **passwords** for machine access. This safeguarded solution can register up to 1,000 users in **three access levels** as Administrator, User, or Guest and can designate to which function user authentication applies. And the MX-M354/M314/M264U/N works with an **external Active Directory server** to extend user authentication to multiple MFPs and a greater number of users.*



User authentication

* Requires optional MX-HD12.

SSL and IPsec Data Encryption

To ensure an extremely high level of network security, the MX-M354/M314/M264U/N employs **SSL** (secure sockets layer) and **IPsec** (IP security) data encryption technologies. SSL encryption prevents data leakage through the network when printing via IPP, browsing secure Web pages (HTTPS), or communicating via e-mail (SMTP and POP3) or FTP (FTPS). IPsec, an obligatory part of the IPv6 Internet protocol, encrypts and authenticates traffic between specified parties.

Data Initialisation

The MX-M354/M314/M264U/N's initialisation function allows confidential information to be erased at the administrator's discretion via the MFP's system setting. Initialising an MFP when it's time to replace it prevents important resources, such as customer information and intellectual property, from leaking out and provides considerable peace of mind.

Scan to Me Function

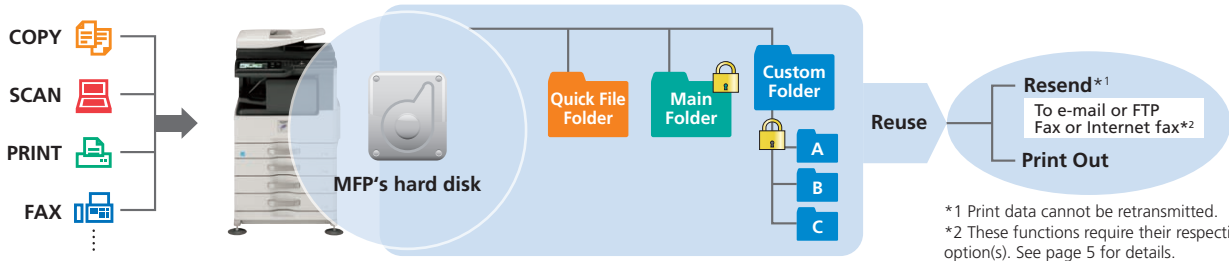
Scan to Me lets a logged-in authorised user send scanned data to his/her own e-mail address simply by pressing the start button. This eliminates the need to manually enter or select the address, thereby preventing documents from being sent to the wrong address.

DOCUMENT MANAGEMENT

Document Management on the Hard Disk

You can save processed job data in designated folders on the MFP's hard disk, making it easy to instantly recall saved documents or jobs for printing and sending at a later time. This contributes greatly to efficient sharing and distribution of information in your business operations.

Note: Requires optional MX-HD12.



*1 Print data cannot be retransmitted.
*2 These functions require their respective option(s). See page 5 for details.

Quick Filing

Up to **10,000 pages** or 1,000 files*³ that have been copied, printed, scanned, or faxed*⁴ can be stored by job in a Quick File Folder. You can easily reuse saved data without having to reload or rescan the original.

Advanced Filing Function

Up to **20,000 pages** or 3,000 files*³ that have been copied, printed, scanned, or faxed*⁴ can be stored by job on the hard disk in up to 1,000 folders with customised names and locations. Enhanced security features require users to enter a 5- to 8-digit password to access secure folders, protecting your sensitive data. Storage options include Main Folder for workgroup sharing and Custom Folder for enhanced-security archiving.

*3: Storage capacity will vary depending on the type of document and the scan settings.

*4: For fax and Internet fax jobs, only transmitted data (not received faxes) can be saved in Document Filing folders.

Easy Access to Stored Files

Documents stored on the hard disk can be quickly and easily searched and accessed from the control panel's LCD via thumbnail displays and file previews or through a Web browser.



Search results



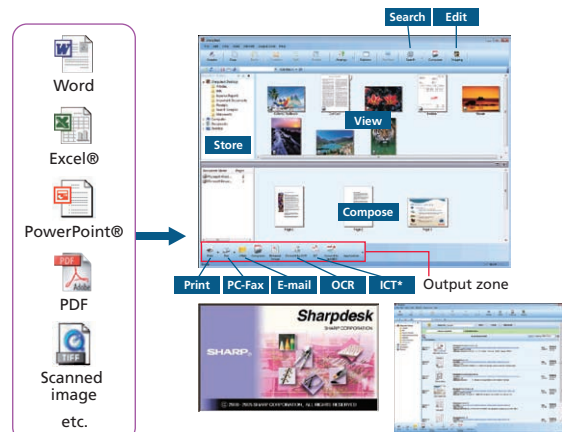
Web access screen

Sharpdesk for Total Document Management

Sharpdesk is an original Sharp application that provides integrated desktop management of documents in over **200 file formats**, including scanned paper-based documents and those created with popular applications such as Word. It allows you to organise, edit, search, and distribute your documents, all with simple drag-and-drop operation.

- Intuitive desktop display features **thumbnail** viewing
- Sharpdesk Imaging provides **annotation** tools for paper-free proofreading
- Sharpdesk **Composer** combines different types of files into a single document
- **Optical character recognition** converts documents into editable text files
- **Output zone** distributes files to e-mail, printers, and other applications
- **File search** allows searching by file name, keyword, or thumbnail

Note: U models require optional MX-NSX1.



* Image Compression Tool for converting images into compact PDF files

Sharp OSA Network Scanner Tool

This client-based scan-to-desktop option is the ideal document management system for small workgroups or offices that don't have servers. Sharp OSA Network Scanner Tool provides centralised scan/print user profiles to give everyone in the office easy one-touch scanning to their PC from any networked MFP—without complicated settings. Scanned documents can be quickly and easily printed, filed, previewed, shared, and stored to save time and improve document workflow. And Sharp OSA Network Scanner Tool automatically names PDF files based on scanned-document titles and can convert scanned documents into text with the OCR engine to create searchable PDF files.

Note: Requires optional MX-AMX2.





DEVICE MANAGEMENT

Web-Based System Settings

Administrators can configure system settings such as address book control, document filing management, and user control (accounting) from either over the network or from the control panel of the MX-M354/M314/M264U/N.



Web-based device management

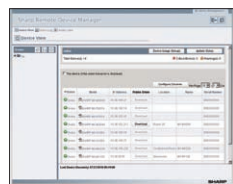
User Control

The MX-M354/M314/M264U/N has capabilities to **restrict machine access and usage**. Easily manage overall running costs by setting access rules through a Web browser to limit or restrict functions, such as the printing out or copying of large-volume documents.

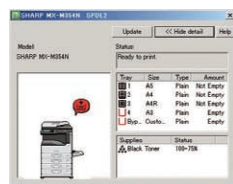
- Authority Groups – Use of each function can be restricted individually.
- User control and account – Up to 1,000 password-protected user accounts can be created for customised access. Accounts can be set up for individuals, groups or departments, in conjunction with the authority group setting. Maximum limits for printing or copying pages can be set for each account.

Network Utility Software

- **Sharp Remote Device Manager (SRDM)** makes printer networks easier to manage by allowing administrators to customise monitored items and view settings such as the IP address directly from their PC through a standard Web browser.
- If the MX-M354/M314/M264U/N is low on paper or toner, the **Printer Status Monitor** will alert you in the form of easy-to-understand graphics, allowing you to avoid problems before they arise.



Web-based SRDM



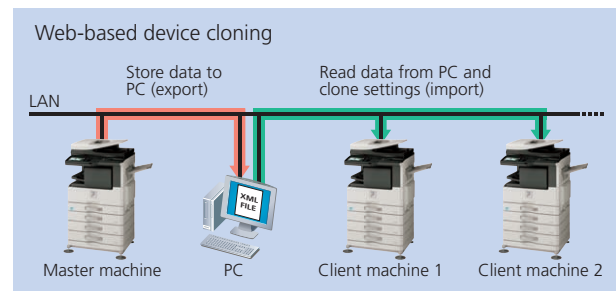
Printer Status Monitor

Remote Diagnosis

The MX-M354/M314/M264U/N can be monitored remotely through a Web browser. In the event of a problem, such as a low amount of toner, an alert is displayed on the Web page. And, the E-Mail Status and Alert function generates e-mail messages to notify the administrator when action or maintenance is required.

Device Cloning

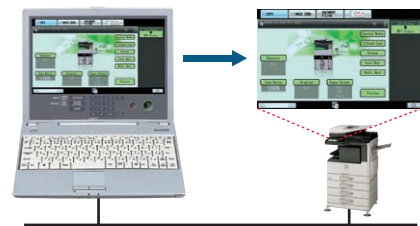
Machine settings can be copied conveniently to another MX-M354/M314/M264U/N via a Web browser in XML format, making it easy to clone machines in a networked environment. With Device Cloning, the administrator no longer needs to set up individual machines one by one, thereby making his/her job a lot easier.



Remote Operation

With the MX-M354/M314/M264U/N's Remote Operation function, the same control panel screen found on the MFP can be displayed on the screen of a remote, office-networked PC, allowing the MFP to be operated via that PC.* This function can, for example, enable the administrator to guide an MFP user in need of help through necessary procedures. It also allows users, such as the physically challenged, who might have difficulty accessing the MFP control panel, to operate the MFP remotely, via the PC.

* Requires VNC application.



EXPANDABILITY

Sharp OSA (Open Systems Architecture)

The MX-M354/M314/M264U/N supports the Sharp OSA* development platform. This innovative technology allows users to interact with critical business and network applications and/or external account software right from the LCD control panel, offering a new realm of control and convenience. And since Sharp OSA utilises industry-standard network protocols, such as XML

and SOAP, the MX-M354/M314/M264U/N can easily integrate with document management systems, enterprise resource planning software, workflow applications, and more.

* Requires optional MX-HD12 and MX-AMX2 and/or MX-AMX3.





EASE OF USE

7.0-Inch Touchscreen LCD

The MX-M354/M314/M264U/N features a logically designed control panel with a wide, clear, WVGA-resolution touchscreen LCD. Easy-to-follow guidance puts step-by-step instructions on the LCD to guide you through all the necessary procedures for staple/sort finishing, pamphlet making, and other functions. Pushing the **Home** button, even in the middle of an operation, takes you back to the Start screen. Programming the most frequently used functions and settings into **My Menu** gives you quick and easy access to them.

Retractable Keyboard (option)

A **full-size retractable QWERTY keyboard** slides out from beneath the control panel to make text input fast and easy: convenient for typing things like e-mail addresses and messages, as well as passwords for user authentication.



Easy-Grip Handles

Easy-grip handles on the MX-M354/M314/M264U/N reflect a universal design that allows the paper drawers to be grasped from the top as well as the bottom for easy opening and closing.



Thumbnail Display and Previews*

Making the search for files easier and more convenient than ever, thumbnails and up-close previews of Document Filing data files, as well as conventional file names, can be displayed on the MX-M354/M314/M264U/N's LCD control panel. And to help users decide which documents to print out or forward to others, the LCD can also display thumbnails and previews of incoming faxes and Internet faxes. The MX-M354/M314/M264U/N even prevents errors in copying, scanning, or saving documents to its hard disk by showing previews of those jobs on the LCD before actually executing them, making it easy to confirm finishing options, scan settings, and other such items.

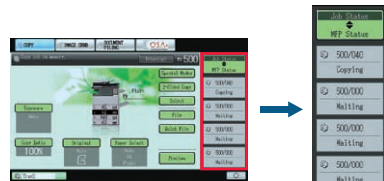


Preview

* Requires optional MX-HD12.

Job Status Screen

Whether printing or copying, the control panel displays a list of all jobs, showing you at a glance the jobs in progress and the position of your job in the queue. And, with a few quick touches of the LCD screen, the **Priority Printing** function lets you easily **change the job queue order** or delete jobs that are no longer needed.



Job status



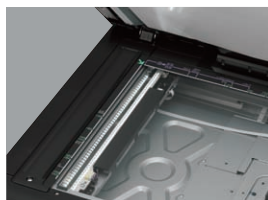
ENVIRONMENT-FRIENDLY

Outstanding Energy Efficiency

- A **short warm-up time** of 20 seconds contributes to reduced overall energy consumption.
- Based on prior usage patterns, the MX-M354/M314/M264U/N automatically determines the optimal length of time to let elapse before going into auto power shut-off mode, helping reduce overall power consumption.

Note: Requires optional MX-HD12.

- For further energy savings, energy-efficient **LED lamps** are employed in the scan unit in place of conventional xenon lamps. A new ASIC (application-specific integrated circuit) also helps the MX-M354/M314/M264U/N deliver excellent performance and energy efficiency.



- The MX-M354/M314/M264U/N has two **energy-saving modes** that kick in after a period of MFP inactivity: one reduces the amount of electricity used; the other shuts off the MFP. And pressing the **power save key** after a job is finished immediately puts the MFP into auto power shut-off mode for further cutbacks on running costs.



N models



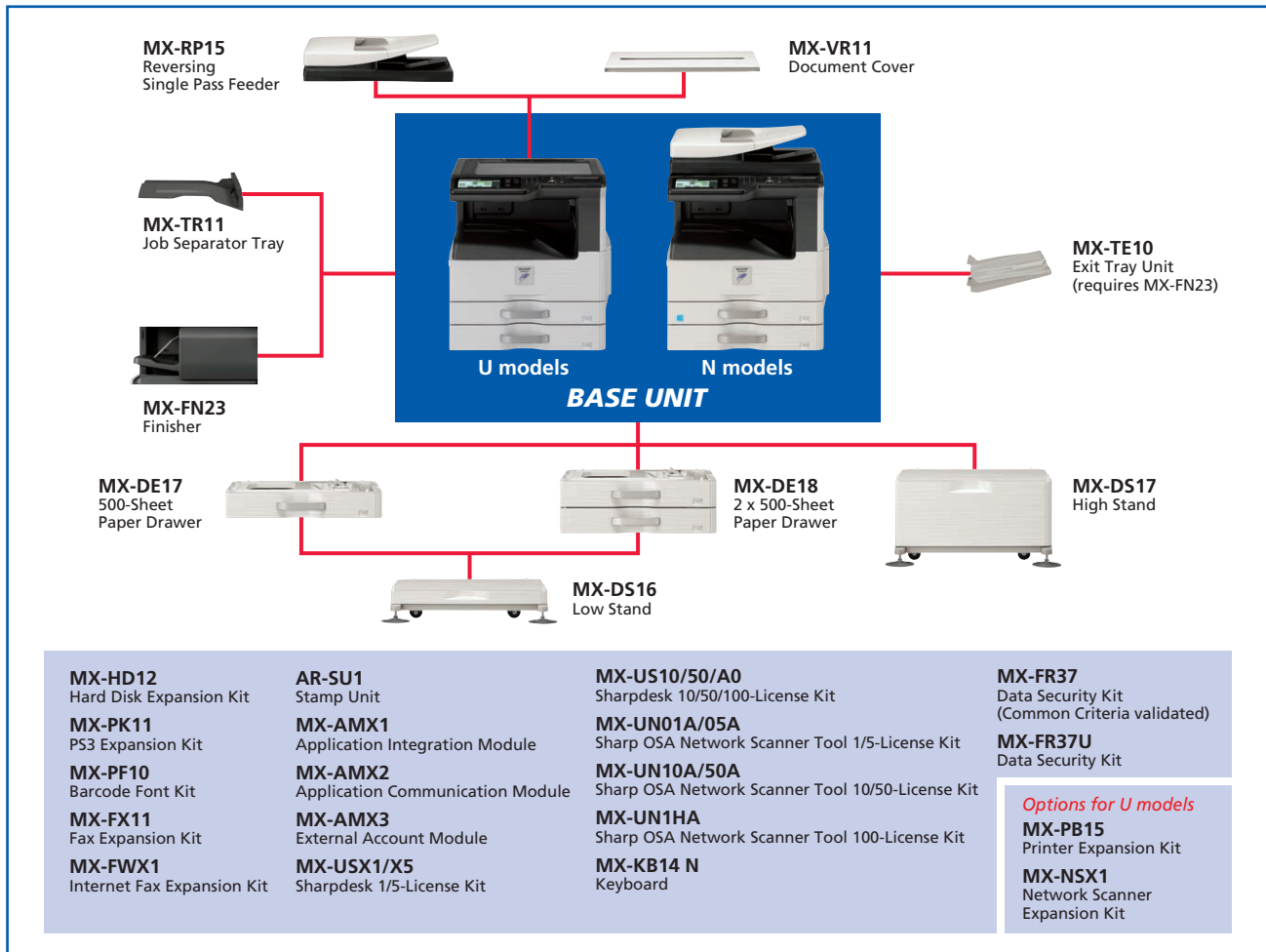
Power save key

Environmentally Conscious Design

In **support of the RoHS directive**, which restricts the use of hazardous substances, Sharp has fully eliminated harmful lead and chromium in all MX-M354/M314/M264U/N parts and materials.

OPTIONS

System Configuration



Certain options may not be available in some areas.

Specifications for Options

MX-FN23 Finisher

Paper size	Non offset Offset Staple	A3 to B6 (11" x 17" to 5 1/2" x 8 1/2") A3 to A5 (11" x 17" to 5 1/2" x 8 1/2") A3 to B5 (11" x 17" to 8 1/2" x 11")
Paper capacity		250 sheets (A3, 11" x 17"), 500 sheets (A4, 8 1/2" x 11")
Stapling capacity		50 sheets (A4 or smaller), 30 sheets (B4 or larger)
Staple position		1 location (rear)

MX-DE17 500-Sheet Paper Drawer

Paper size	A3 to B5 (11" x 17" to 8 1/2" x 11")
Paper capacity	500 sheets (80 g/m ²)

MX-DE18 2 x 500-Sheet Paper Drawer

Paper size (upper and lower tray)	A3 to B5 (11" x 17" to 8 1/2" x 11")
Paper capacity (upper and lower tray)	500 sheets each (80 g/m ²)

Sharpdesk System Requirements

Supported OS	Windows® XP (SP2) Professional/Home Edition, Windows Vista®, Windows® 7
Hard disk	Minimum requirement of operating system used plus at least 500MB to store Sharpdesk and Network Scanner Tool programs
CPU	Pentium® or equivalent processor (Windows XP: 800 MHz 32-bit/64-bit processor; Windows Vista and Windows 7: 1 GHz 32-bit/64-bit processor)
Memory	Windows XP: 512MB RAM; Windows Vista and Windows 7: 1GB RAM/2GB RAM (Windows 7 64-bit)
Monitor	Windows XP: SVGA display; Windows Vista and Windows 7: Direct X9 support with 128MB video RAM

Sharp OSA Network Scanner Tool System Requirements

	Host PC	Client PC
Supported OS	Windows® XP Professional (SP3 or later; 32-bit); Windows Vista® Business, Enterprise, or Ultimate Edition (SP2 or later; 32-bit or 64-bit) Windows® 7 Professional, Enterprise, or Ultimate Edition (32-bit or 64-bit)	Windows® XP Home (SP3 or later; 32-bit) Windows Vista® Home Basic or Home Premium (SP2 or later; 32-bit or 64-bit) Windows® 7 Home Basic or Home Premium (32-bit or 64-bit)
Hard disk and memory	2GB RAM 1GB available hard disk space (work space is also required)	400MB available hard disk space (work space is also required)
Other	.NET Framework 3.5 (SP1); Microsoft Internet Explorer (XP: 6.0 or later) Internet Information Services 5.1 or later; TCP/IP networking with no DHCP	Sharpdesk v3.3 or later*; TCP/IP networking (with or without DHCP)

* The following functions cannot be used without Sharpdesk installed on the client PC: Some scan/print default profiles for Sharpdesk; thumbnail view (except image files); scan/print previews (except image files); advanced search; compressed PDF

Note: When using Sharp OSA, please ask your Sharp representative about PC system requirements.

SPECIFICATIONS

General

Type	Desktop
Engine speed	Max. 35/31/26 cpm/ppm (A4, 8 1/2" x 11", long-edge feeding)
Paper size	Max. A3 (11" x 17"), min. A5 (5 1/2" x 8 1/2")
Paper capacity (80 g/m ²)	Standard: 1,100 sheets (two 500-sheet trays and 100-sheet multi-bypass tray) Maximum: 2,100 sheets
Paper weight	Tray: 56 g/m ² to 105 g/m ² (13 lbs bond to 28 lbs bond) Multi-bypass tray: 56 g/m ² to 200 g/m ² (13 lbs bond to 110 lbs index)
Warm-up time*1	20 sec.
Memory	[Standard] 2GB (copy/print shared) [Option] 160GB HDD*2
Power requirements	Rated local AC voltage ±10%, 50/60 Hz
Power consumption (max.)	1.84 kW (220 to 240V), 1.44 kW (100 to 127V)
Dimensions (W x D x H)	[U models] 625 x 645 x 686 mm (24 39/64" x 25 25/64" x 27 1/64")*3 [N models] 625 x 645 x 799 mm (24 39/64" x 25 25/64" x 31 29/64")
Weight (approx.)	[U models] 46.5 kg/102.5 lbs (220 to 240V) 46.0 kg/101.4 lbs (100 to 127V) [N models] 52.1 kg/114.9 lbs (220 to 240V) 51.6 kg/113.8 lbs (100 to 127V)

Copier

Original paper size	Max. A3 (11" x 17")
First copy time*4	4.0/4.4/4.9 sec.
Continuous copy	Max. 999 copies
Resolution	Scan: 600 x 600 dpi, 600 x 400 dpi, 600 x 300 dpi Print: 600 x 600 dpi
Gradation	Scan: 256 levels Print: 2 levels
Zoom range	25% to 400% (25% to 200% using RSPF) in 1% increments
Preset copy ratios	Metric: 10 ratios (5R/5E), inch: 8 ratios (4R/4E)

Network Colour Scanner (optional MX-NSX1 required for U models)

Scan method	Push scan (via control panel), pull scan (TWAIN-compliant application)*5
Resolution	Push scan: 100, 200, 300, 400, 600 dpi Pull scan: 75, 100, 150, 200, 300, 400, 600 dpi 50 to 9,600 dpi via user setting
File formats	TIFF, PDF, PDF/A, encrypted PDF, JPEG (colour only), XPS
Scanner utilities	Sharpdesk, Sharp OSA Network Scanner Tool
Scan destinations	Scan to e-mail/desktop/FTP server/network folder (SMB)/USB memory*6

*1: At rated voltage, 23°C (73.4°F). May vary depending on operating conditions and environment.
 *2: HDD capacity depends on procurement and sourcing status.
 *3: Including document cover.
 *4: Long-edge feeding of A4 (8 1/2" x 11") sheets from 1st paper tray, using document glass, MFP in fully ready condition. May vary depending on operating conditions and environment.
 *5: Optional MX-HD12 required.
 *6: Scan to USB memory is standard on both N and U models (MX-NSX1 is not required).
 *7: Storage capacity will vary depending on the type of document and the scan settings.
 *8: Some features require option(s).
 *9: U models require optional MX-PB15.
 *10: Optional MX-PK11 required for Mac OS and EtherTalk.
 *11: PCL requires optional MX-PB15. PostScript 3 requires optional MX-PK11 and MX-PB15.
 *12: Requires optional MX-PK11.
 *13: Based on Sharp's standard chart with approx. 700 characters (A4 or 8 1/2" x 11" long-edge feeding) at standard resolution in Super G3 mode, 33,600 bps, JBIG compression.

Document Filing (optional MX-HD12 required)

Document filing capacity*7	Main and custom folders: 20,000 pages or 3,000 files Quick file folder: 10,000 pages or 1,000 files
Stored jobs*8	Copy, print, scan, fax transmission
Storage folders	Quick file folder, main folder, custom folder (max. 1,000 folders)
Confidential storage	Password protection

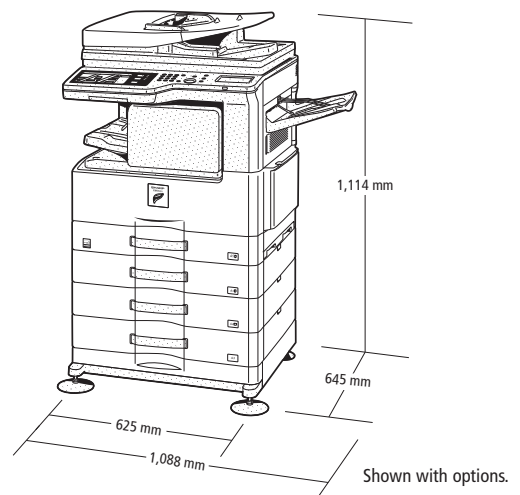
Network Printer

Resolution	1,200 x 600 dpi*9, 600 x 600 dpi
Interface	USB 2.0, 10Base-T/100Base-TX/1000Base-T
Supported OS*10	Windows Server® 2003, Windows Server® 2008, Windows Server® 2012, Windows® XP, Windows Vista®, Windows® 7, Windows® 8, Mac OS X 10.4, 10.5, 10.6, 10.7, 10.8, 10.9
Network protocols*10	TCP/IP (IPv4, IPv6), IPX/SPX (NetWare), NetBEUI, EtherTalk (AppleTalk)
Printing protocols	LPR, Raw TCP (port 9100), POP3 (e-mail printing), HTTP, Novell Printserver application with NDS and Bindery, FTP for downloading print files, EtherTalk printing, IPP
PDL (emulation)	[U models] Standard: Sharp Advanced Printing Language Option*11: PCL 6 emulation, PostScript® 3™ emulation [N models] Standard: PCL 6 emulation Option*12: PostScript 3 emulation
Available fonts	80 fonts for PCL, 136 fonts for PostScript 3 emulation

Facsimile (optional MX-FX11 required)

Compression method	MH/MR/MMR/JBIG
Communication protocol	Super G3/G3
Transmission time	Less than 3 seconds*13
Modem speed	33,600 bps to 2,400 bps with automatic fallback
Transmission resolution	From Standard (203.2 x 97.8 dpi) to Ultra Fine (406.4 x 391 dpi)
Recording width	A3 to A5 (11" x 17" to 5 1/2" x 8 1/2")
Memory	512MB, max. 1GB*5
Grey scale levels	Equivalent to 256 levels

• Design and specifications are subject to change without prior notice.
 • PCL is a registered trademark of Hewlett-Packard Company. PostScript 3 is either a registered trademark or trademark of Adobe Systems Incorporated in the US and/or other countries. Windows, Windows Server, Windows Vista, Excel, and PowerPoint are registered trademarks of Microsoft Corporation in the US and/or other countries. Macintosh, Mac OS, EtherTalk, and AppleTalk are trademarks of Apple Inc., registered in the US and other countries. All other brand names and product names may be trademarks or registered trademarks of their respective owners.
 • The ENERGY STAR logo is a certification mark and may only be used to certify products that have been determined to meet the ENERGY STAR programme requirements. ENERGY STAR is a US registered mark. The ENERGY STAR guidelines apply to products only in the US, the EU, Japan, Canada, Australia, New Zealand, and Taiwan.



Distributed by:

